



# SPECTATOR RAIL

Sports railings and mesh panel system

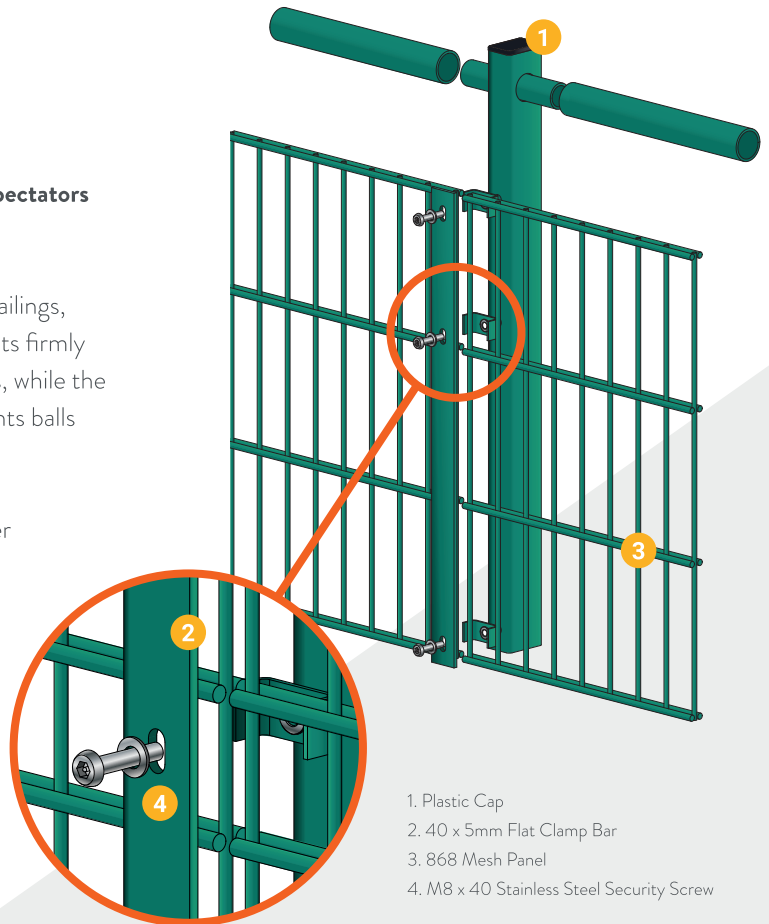
**Ensuring safety and creating a defined space between the spectators and the field is crucial in most spectator sports settings.**

Our Spectator Rail system is features powder-coated steel railings, offering a secure boundary around the action. The sturdy posts firmly rooted in the ground provide a reliable support for spectators, while the lower mesh fence, made from durable twin-wire steel, prevents balls from leaving the field and offers space for advertising boards.

This spectator rail system is ideally suited for us as a perimeter barrier around football, rugby and hockey pitches, as well as running tracks.

## Applications

- Running Tracks
- Spectator Enclosures
- School Playgrounds
- Crowd Control



1. Plastic Cap
2. 40 x 5mm Flat Clamp Bar
3. 868 Mesh Panel
4. M8 x 40 Stainless Steel Security Screw



Other RAL colours available as special order



## Specification

Nominal Fence Height (m)	Panel Size Height x Width (mm)	Post Size (mm) Ends/Iners	Post Size (mm)		Overall Length of Post (mm)	Number of Fixings	
			Internal Corner	External Corner		Ends/Inters (1 Clamp)	Corners (2 Clamps)
1.2	1,030 x 2,506	60 x 40	100 x 100	100 x 100	1,800	4	8

Data subject to change

# SPECTATOR RAIL

## DATASHEET

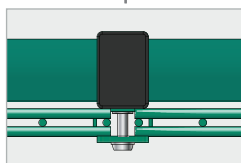
Version 1.0 | 11-23



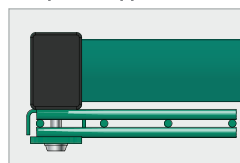
### Posts, Clips and Fixings

The posts and full length clamp bars that are supplied provide a fixing system which secures the panels but allows for variations. The system is easy to install and allows the panels to be stepped, helping the fence line to follow the contours of the ground. With the vandal resistant security fixings this post and clamp system provides a higher level of security than the traditional clip system.

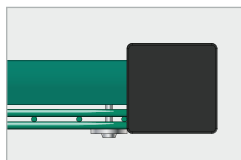
Intermediate post



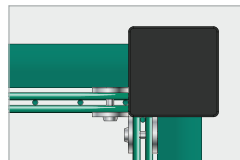
End post (Clipped)



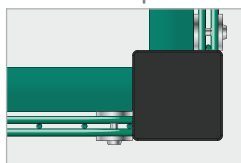
End post (Flanged)



Internal corner post



External corner post



Integrated Fencing, Ty Menter, Navigation Park, Abercynon, Mid Glamorgan, CF45 4SN

[www.integratedfencing.co.uk](http://www.integratedfencing.co.uk) | 0330 1756 465

While care has been taken to ensure that all information provided on this data sheet is accurate, we reserve the right to change product specifications at any time. E&OE.

## Product Technical Information

### Panels:

- Mesh size 200 x 50mm.
- 1 x 6mm vertical and 2 x 8mm horizontal wire.
- Manufactured to BS 4102 and galvanised to BS EN 10244-2:2001 class D.
- Weld strength is 75% of the minimum tensile strength of the wire (tensile range 540-690 N/m<sup>2</sup>).

### Posts:

- Dig-in posts. Post size 1.8m high (0.6m in the ground).
- Post material manufactured to BS EN 10210-2:1997 and galvanised to BS EN 10346:2009.
- Supplied with plastic cap.

### Railings:

- Railing diameter 48mm

### Fixings:

- Clamp Bar: 40 x 5mm (full length of mesh panel).
- M8 x 40 Fourtress tamper resistant hardened steel security screw.
- Rubber backstops are available for all fixings for anti-vibration.

### Finishings:

- Panels, Posts and Railings are galvanised before being powder coated to BS EN 13438:2005 (min 100 micron).
- Available in all standard RAL colours.

### Options:

- Panel can be replaced with an 868 Rebound panel for extra ball return properties.
- Optional kickboards for hockey and cricket.

## 15 Year Product Guarantee



We work hard to ensure that when you choose our products, there are no shocks or surprises, and that the finished item we deliver looks and functions every bit as well as the initial concept. But should the worst happen we can guarantee that we will not stop until everything has been resolved. In addition, we are able to offer a 15-year guarantee, covering the performance and appearance of our mesh fencing systems. Giving you added confidence when specifying our products..

